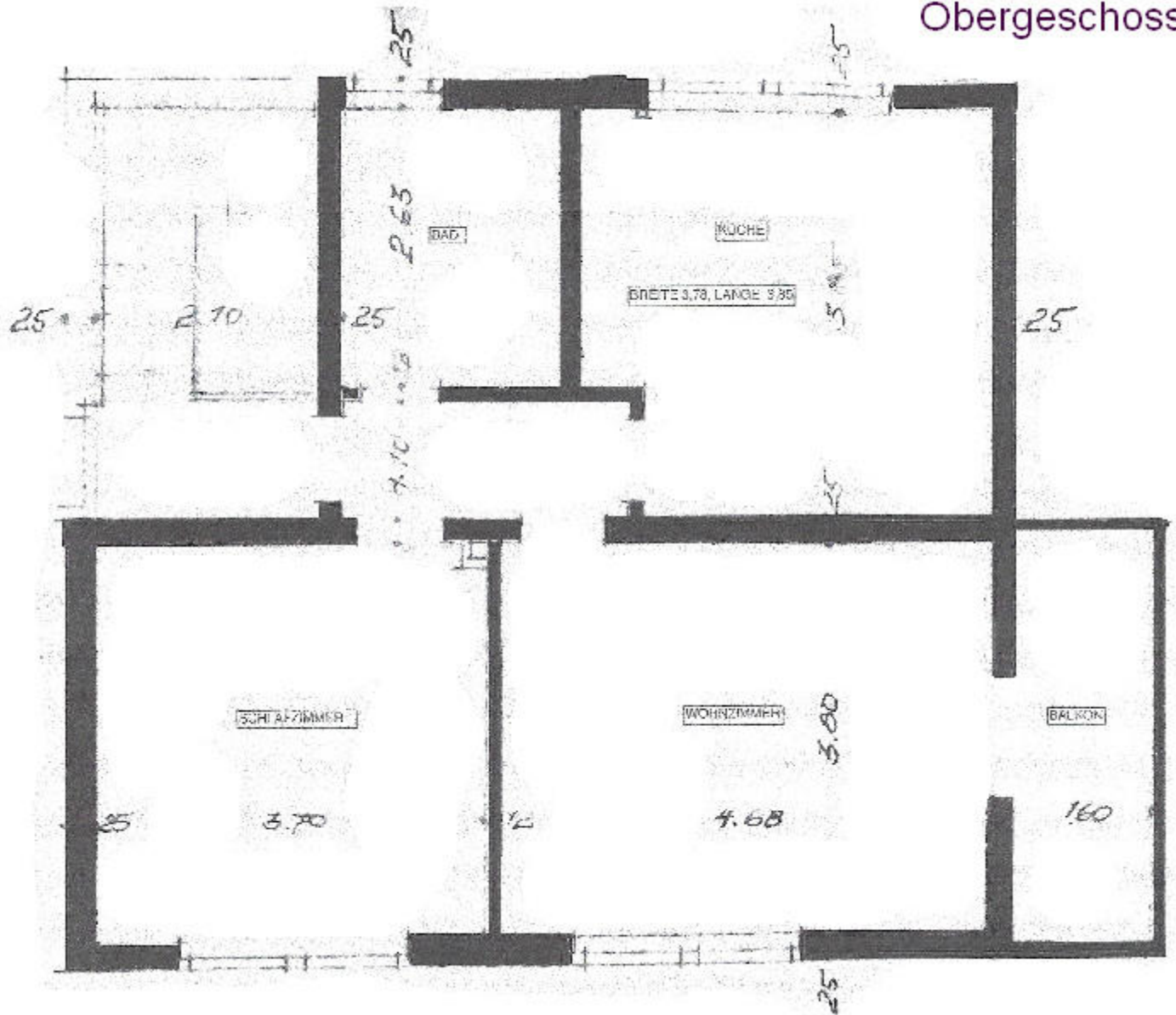


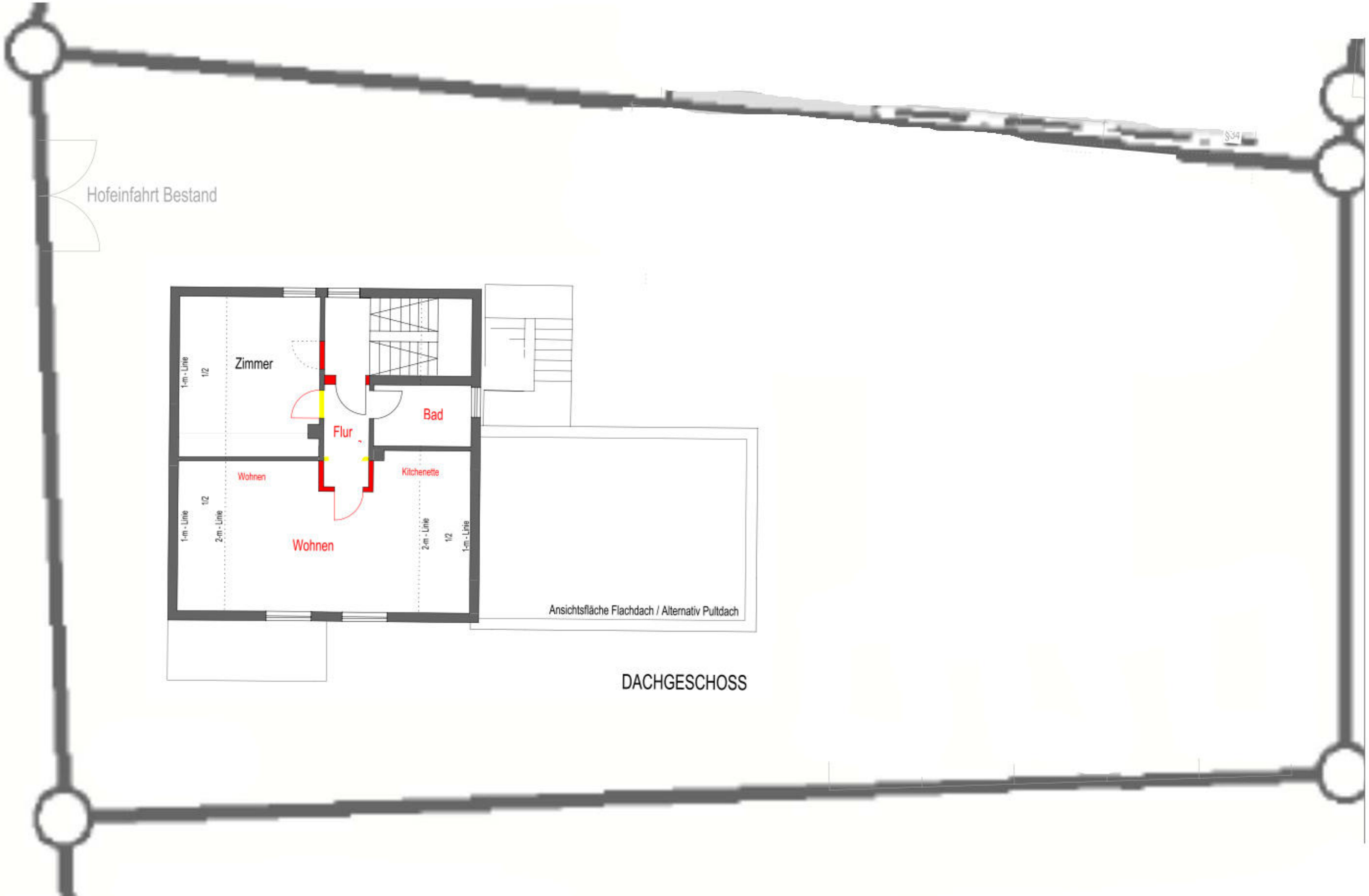


# Obergeschoss

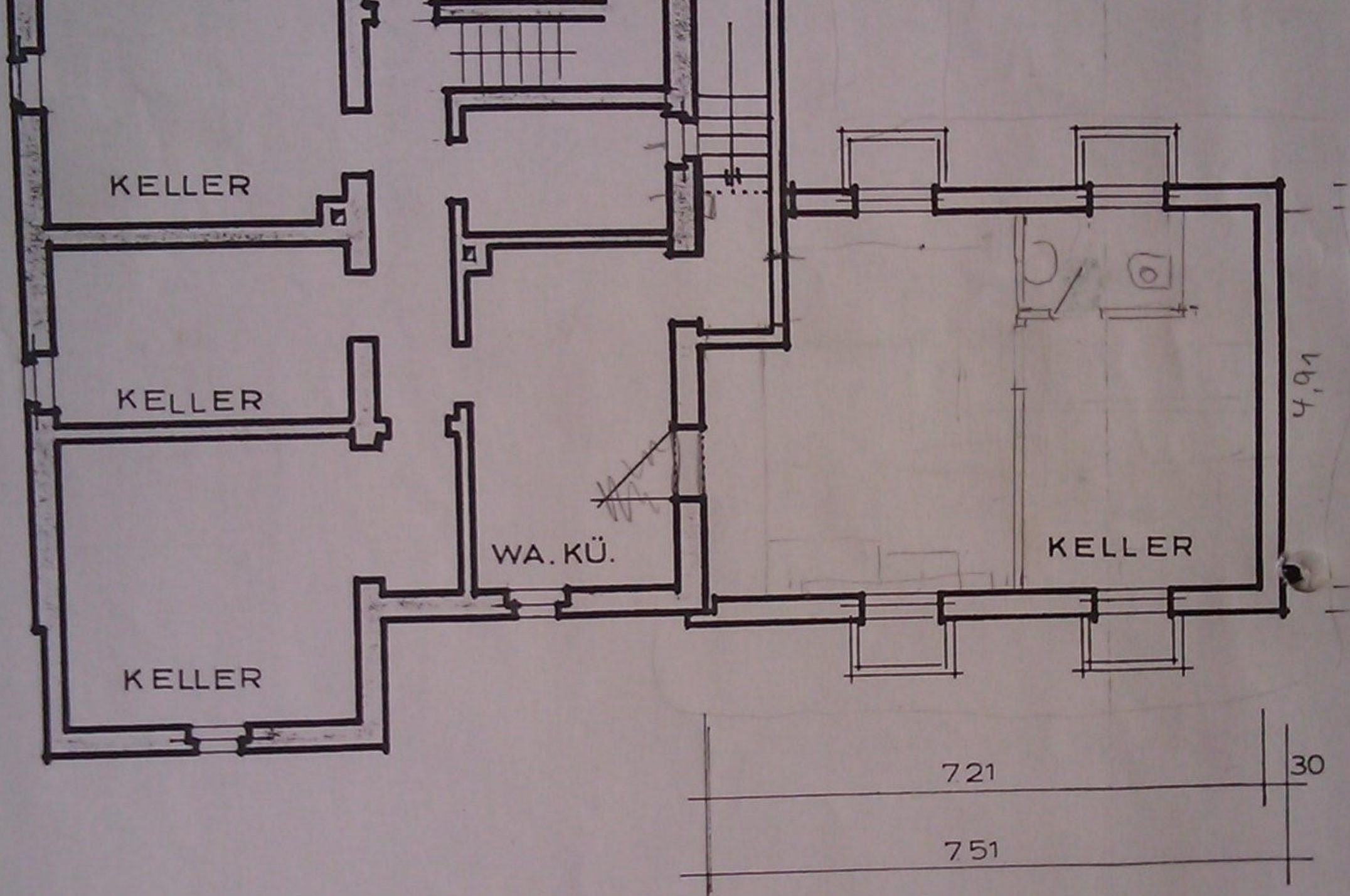


# Möglicher Ausbau im Obergeschoss

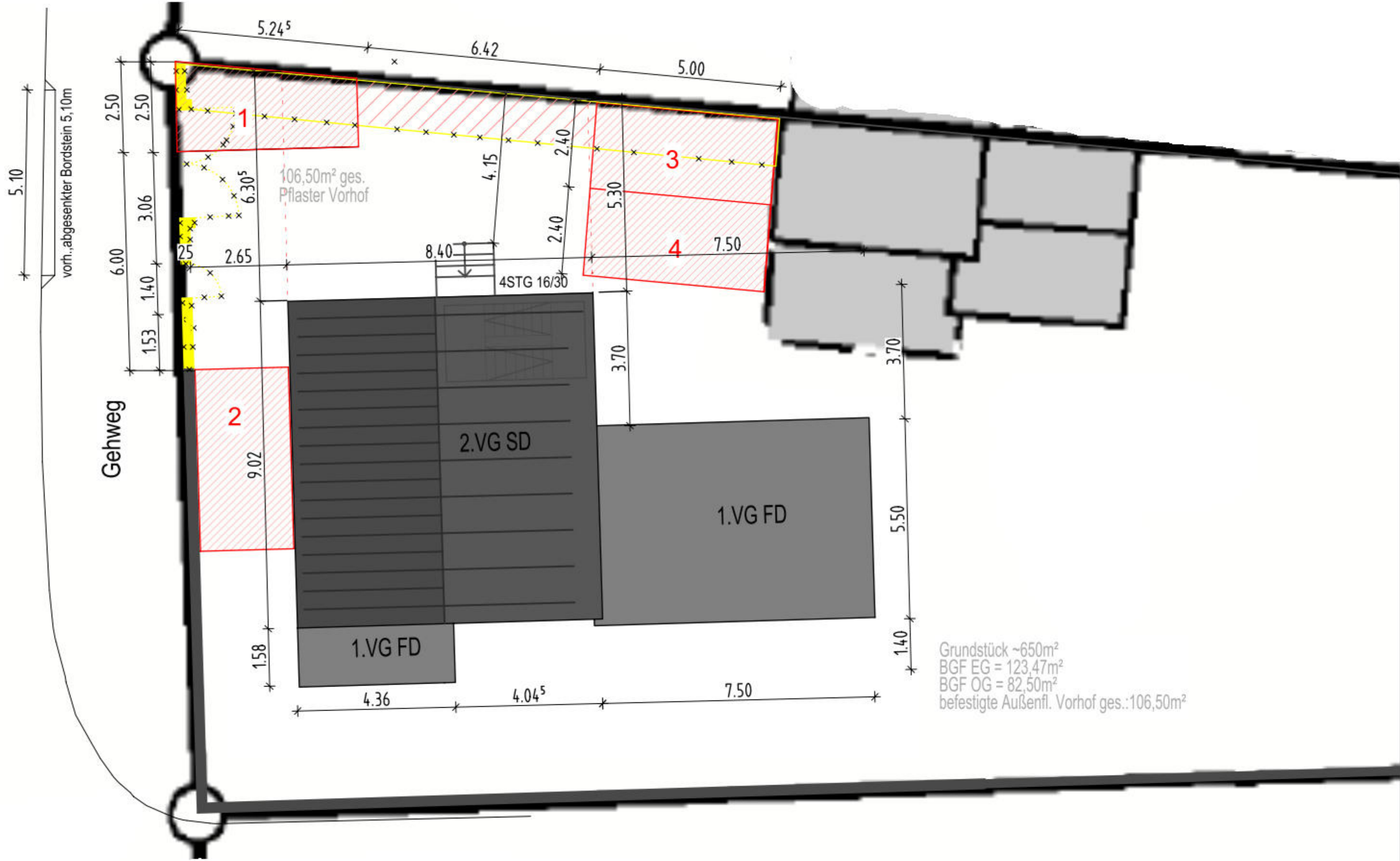








# Genehmigte Stellplätze



Grundstück ~650m<sup>2</sup>  
 BGF EG = 123,47m<sup>2</sup>  
 BGF OG = 82,50m<sup>2</sup>  
 befestigte Außenfl. Vorhof ges.: 106,50m<sup>2</sup>